



7 Bader Crescent

Chatham ME5 0DJ

Guide Price £400,000



6



2



1

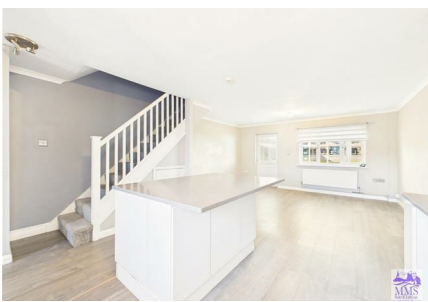


C

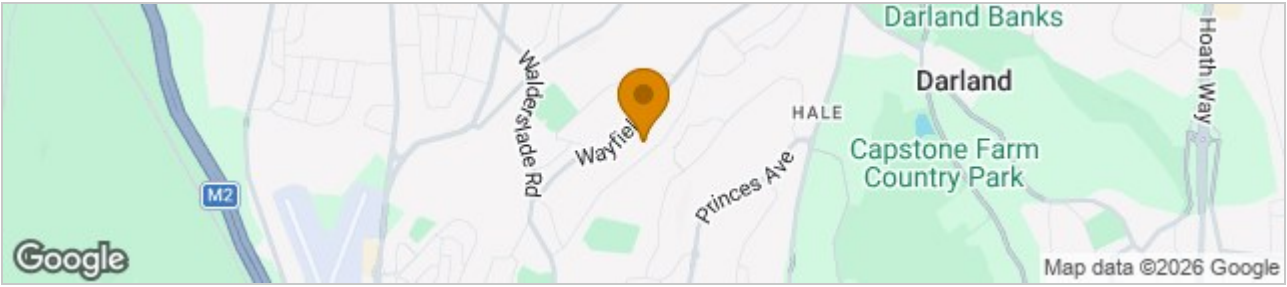
****NO CHAIN**5/6 BEDROOMS**VERSATILE ACCOMMODATION**GENEROUS AMOUNT OF PARKING****

GUIDE PRICE £400,000 - £425,000

Nestled in Bader Crescent of Chatham, this end-terrace house presents a fantastic opportunity for those seeking a spacious and versatile family home. Built in the early 2000s, the property boasts an impressive amount of square feet of living space, thoughtfully extended to accommodate modern living needs. Upon entering, you are greeted by a large open-plan kitchen, lounge, and dining area, perfect for entertaining or family gatherings. The adjoining conservatory floods the space with natural light, creating a warm and inviting atmosphere. Additionally, the ground floor features a unique annex room with its own secure street door and a convenient WC, offering the potential for a formal lounge, another bedroom or a private guest suite. The first floor comprises five well-proportioned bedrooms, providing ample space for family or guests. The fifth bedroom could be suitable for use as a study, cot room, or small single bedroom. A family bathroom completes this level, ensuring comfort and convenience for all. Outside, the property boasts a beautifully designed three-tiered garden, with each level offering usable space. The flat areas include generous lawns on two tiers, ideal for children to play or for hosting summer barbecues, while a patio at the bottom provides a perfect spot for outdoor relaxation. The driveway accommodates up to five vehicles, adding to the practicality of this home. The property is situated close to many amenities including schools, shops and bus routes. With no onward chain and a council tax band of C, this property is ready for you to move in and make it your own. Don't miss out on this exceptional opportunity to secure a wonderful family home in a sought-after location.



Area Map



Floor Plans

Ground Floor

Floor 1

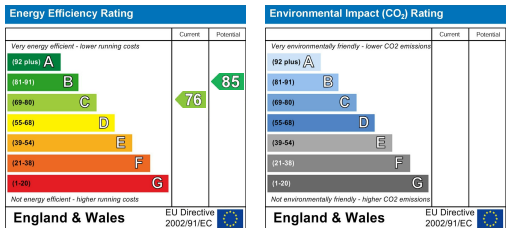
Approximate total area⁽¹⁾
1256 ft²
116.7 m²

(1) Excluding balconies and terraces

Calculations reference the RICS IPMS 3C standard. Measurements are approximate and not to scale. This floor plan is intended for illustration only.

GIRAFFE360

Energy Efficiency Graph



These particulars, whilst believed to be accurate are set out as a general outline only for guidance and do not constitute any part of an offer or contract. Intending purchasers should not rely on them as statements of representation of fact, but must satisfy themselves by inspection or otherwise as to their accuracy. No appliances or fittings have been tested by MMS. No person in this firm's employment has the authority to make or give any representation or warranty in respect of the property or items contained.